



THIS CHANGES EVERYTHING

CRYPTOSPORIDIOSIS &
ITS ECONOMIC IMPACT

www.msd-animal-health.com



Cryptosporidiosis

Disease prevalence & impact

- » *Cryptosporidium parvum* is a very common and challenging issue plaguing today's farms.
- » Neonatal Calf Diarrhea (NCD) is the leading cause of morbidity and mortality in newborn calves worldwide. Cryptosporidiosis is the most seen pathogen.¹

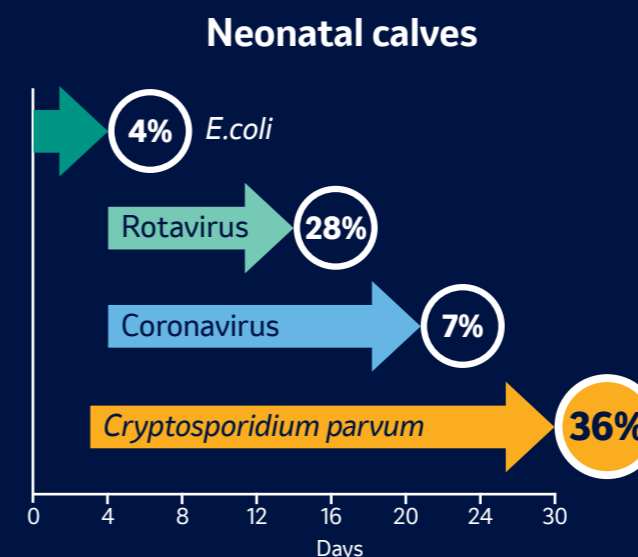


Cryptosporidium

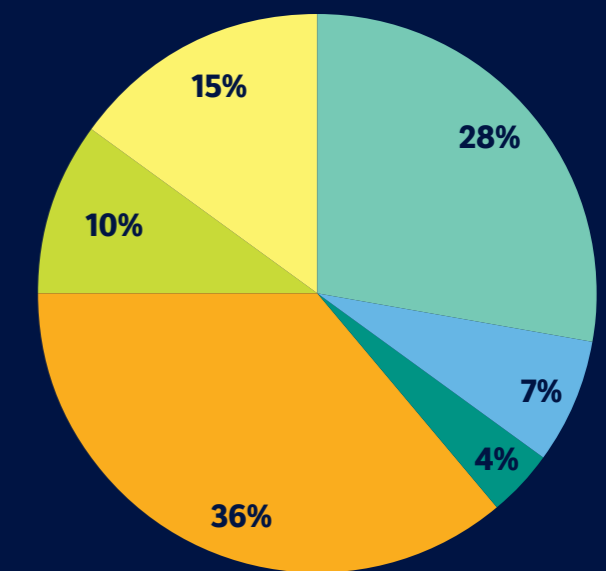
Most common pathogen in the first month

- » Calf scours is the most common cause of death in calves less than 1 month old.³
- » *C. parvum*, coronavirus, rotavirus and *E. coli* are the four major NCD pathogens.^{4,5}

Pathogens that cause NCD in the first month and % of total cases¹



Causes of calf scour found between 2012 -2020¹



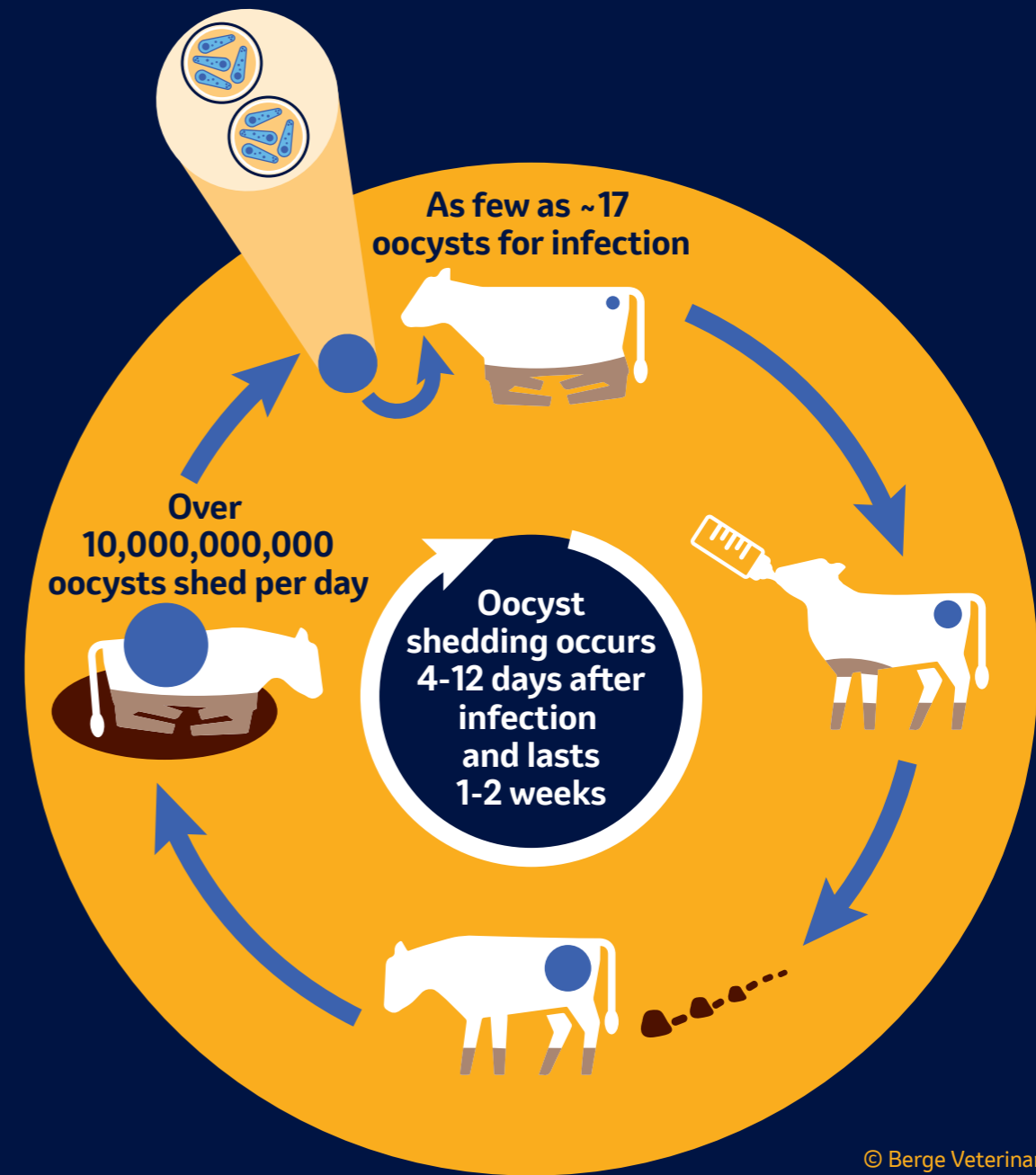
- Older calves (>1 month)**
- BVD-virus
 - *Salmonella*
 - *Giardia*
 - *Eimeria spp.* (coccidiosis)

- Rotavirus
- *C. parvum*
- Coronavirus
- *Salmonella*
- *E. coli* K99
- Coccidiosis

Cryptosporidium

Lifecycle & infection rate

- » After infection with only 17 oocysts, a calf can get Cryptosporidiosis and starts shedding oocysts.⁶
- » To put this number into context, a naturally infected 6-day-old calf can shed billions of oocysts per day.⁷
- » These oocysts can survive for months in the environment and are not easily killed by disinfectants.⁸



© Berge Veterinary Consulting



Economic impact

Growth, treatment & labor

» Calves that experienced severe cryptosporidiosis as neonates show a significantly reduced live weight gain compared to calves with no clinical signs.⁹

BEEF LOSSES (CRYPTOSPORIDIOSIS)

- 34 kg

Average difference in weight gain at 6 months⁹

€161
LOSS

in direct sales per beef calf⁹

DAIRY LOSSES (CALF DIARRHEA)

€35.98 Reduced average growth rate of 0.1 kg/day for 180 days ¹⁰	€22.69 Mortality rate of 4% due to scours / 100 cows ¹⁰	€8.71 Treatment costs, 30% of calves receive treatment / 100 cows ¹⁰
---	--	---

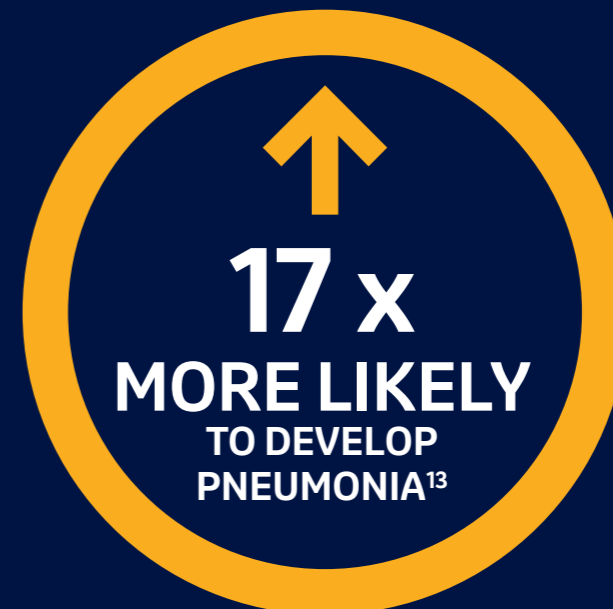
€67.25
COST

per dairy calf

Economic impact

Morbidity of other diseases

» Studies suggest calf diarrhea can increase the calf's chances of experiencing Bovine Respiratory Disease (BRD) in the future.^{11,12}





Please scan for further information

To find out more, please contact your veterinarian today.

REFERENCES

- 1 APHA 2012-2020. Scour causing pathogen identification in neonatal, pre-wean, post-wean groups.
- 2 Market research, MSD AH (2022), data on file.
- 3 Brunauer, M., Roch, F.-F., & Conrady, B. (2021). Prevalence of worldwide neonatal calf diarrhoea caused by bovine rotavirus in combination with bovine coronavirus, *escherichia coli* K99 and *cryptosporidium* spp.: A meta-analysis. *Animals*, 11(4), 1014. <https://doi.org/10.3390/ani11041014>
- 4 Naylor JM. Neonatal Calf Diarrhea. *Food Anim Pract* 2009;70. <https://doi.org/10.1016/B978-141603591-6.10021-1>.
- 5 Millemann Y. Diagnosis of neonatal calf diarrhoea. *Rev Med Vet (Toulouse)* 2009;160:404-9.
- 6 Zambriski, J. A., Nydam, D. V., Wilcox, Z., Bowman, D. D., Mohammed, H. A., & Liotta, J. L. (2013). *Cryptosporidium parvum*: Determination of ID50 and the dose-response relationship in experimentally challenged dairy calves. *Veterinary Parasitology*, 197(1-2), 104-112. <https://doi.org/10.1016/j.vetpar.2013.04.022>
- 7 Nydam, D. V., Wade, S. E., Schaaf, S. L., & Mohammed, H. O. (2001). Number of *Cryptosporidium parvum* oocysts or *Giardia* spp cysts shed by dairy calves after natural infection. *American Journal of Veterinary Research*, 62(10), 1612-1615. <https://doi.org/10.2460/ajvr.2001.62.1612>
- 8 Santin, M. (2020). *Cryptosporidium* and *Giardia* in Ruminants. *Veterinary Clinics of North America-food Animal Practice*, 36(1), 223-238. <https://doi.org/10.1016/j.cvfa.2019.11.005>
- 9 Shaw, H. J., Innes, E. A., Morrison, L. J., Katzer, F., & Wells, B. (2020). Long-term production effects of clinical *cryptosporidiosis* in neonatal calves. *International Journal for Parasitology*, 50(5), 371-376. <https://doi.org/10.1016/j.ijpara.2020.03.002>
- 10 ADAS Report: Economic impact of health and welfare issues in beef cattle and sheep in England (p. 35/36). Conversion rate to EUR 1.16 (Aug, 23).
- 11 Gulliksen, S., Jor, E., Lie, K., Løken, T., Åkerstedt, J., & Østerås, O. (2009). Respiratory infections in Norwegian dairy calves. *Journal of Dairy Science*, 92(10), 5139-5146. <https://doi.org/10.3168/jds.2009-2224>
- 12 Pardon, B., Hostens, M., Duchateau, L., Dewulf, J., De Bleecker, K., & Deprez, P. (2013). Impact of respiratory disease, diarrhoea, otitis and arthritis on mortality and carcass traits in white veal calves. *BMC Veterinary Research*, 9(1), 79. <https://doi.org/10.1186/1746-6148-9-79>
- 13 A Practical Guide to Diagnosis, Bovine Neonatal Diarrhoea, p.10, MSD Animal Health.

Copyright © 2023 Merck & Co., Inc., Rahway, NJ, USA and its affiliates. All rights reserved. GL-BOV-230900024

www.msd-animal-health.com

